

Creating Comfort Across Cultures: Adapting to Shifts in Global Education



Denise Douglas, Ed.D.
Lindsey Jarvie
Maggie Norby

Global Awareness

Global awareness positively impacts “interconnections and concern in terms of empathy and understanding the importance of solidarity” (Global Education Network Europe, 2019, p. 23).



Outcomes



Discuss strategies to engage with empathy by creating a culture of kindness



Explore how to encourage mindfulness with mindfulness



Examine ways to integrate immersive and diverse content with purpose

How to Engage Diverse Student Populations

Objectives and Agenda



Empathy: A primary, strategic tool for connectedness, belonging, and success by creating a culture of kindness



Examine ways to integrate immersive and diverse content with purpose and discuss strategies

- Culturally sensitive and adaptive instruction
- Understand students' backgrounds and needs
- Address students' backgrounds and needs with humility, attention, and empathy (Gladwell, 2019)



Empathy: A Primary, Strategic Tool for Connectedness, Belonging, and Success



Empathy : A Strategic Tool for Connectedness, Belonging, and Success

An authentic, empathetic, and mindful approach to the student experience is paramount to meeting the demands of the global education paradigm shift (de Rivera & Mahoney, 2018).

Shift towards the collective and connectedness (Pavlovich, 2011).

**PARADIGM
SHIFT**



Empathy: A Strategic Tool for Connectedness, Belonging, and Success

Ways to Build Empathy and Inclusion

- Assume the best of others.
- Ask crazy good questions.
- Listen aggressively.

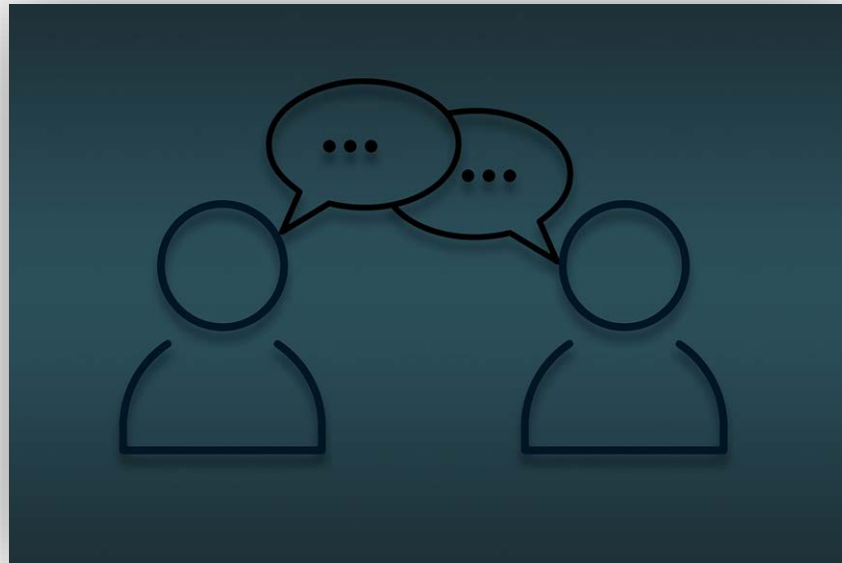
(Choy, 2021)



Empathy: A Strategic Tool for Connectedness, Belonging, and Success

What are ways that you build empathy and inclusion?

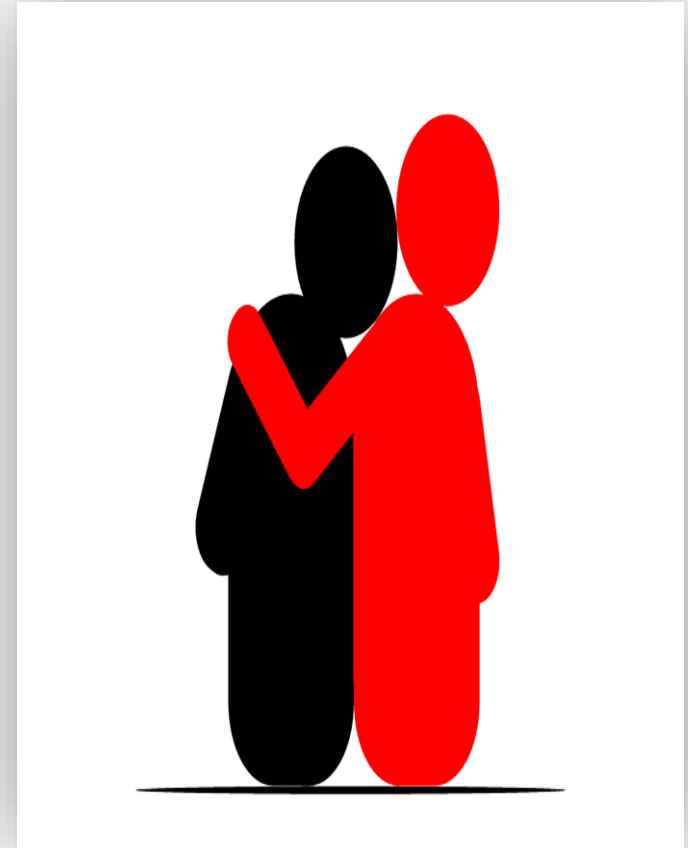
Let's Talk!



Empathy: A Strategic Tool for Connectedness, Belonging, and Success

Empathy is the ability to intuitively understand and share the feelings of others, “cognitively understand,” and respond (Pavlovich, p. 2, 2011).

“Empathy is an emotional attunement and a conceptual understanding” (Hanson, 2021, Slide 1).



© 2006 The Authors
Journal compilation © 2006 Blackwell Publishing Ltd

Empathetic people...

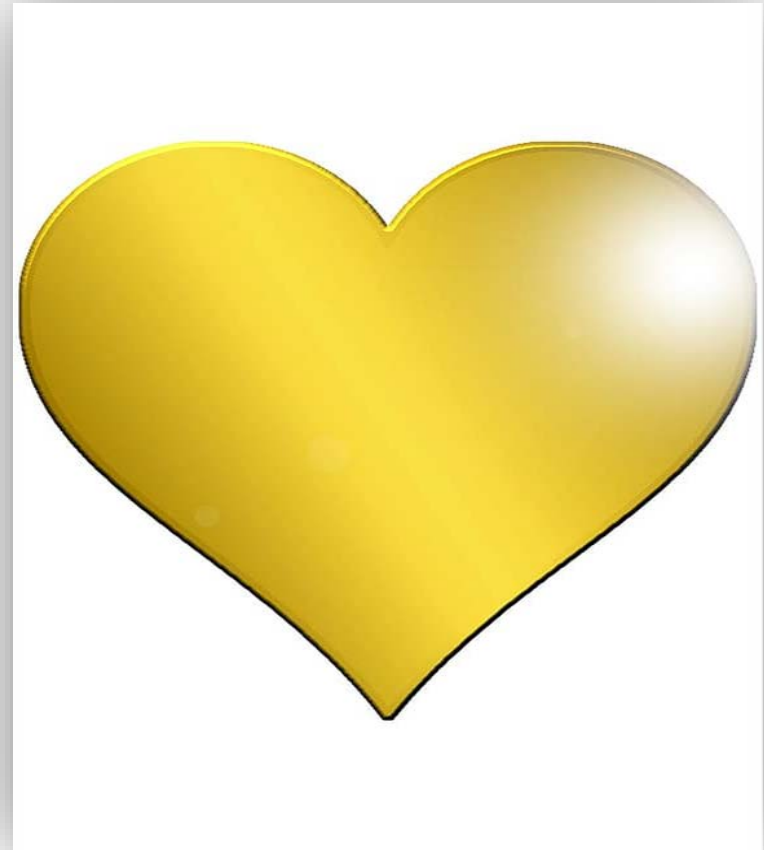
- Are more trusted.
- More accurately understand the feelings and motives of others.
- Are able to build the confidence of others by showing they care.



Empathy : A Strategic Tool for Connectedness, Belonging, and Success

When we have empathy, we:

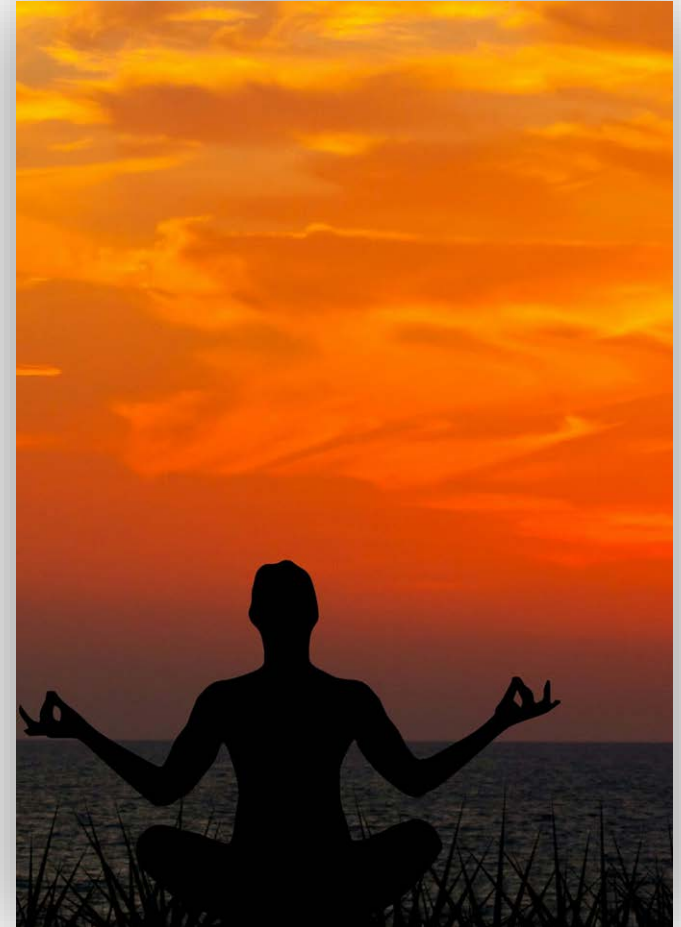
- Feel what others feel.
- Understand and identify with what others think and do.
- Appreciate the emotions and experiences of others.
- See things through the other person's perspective.
- Seek not to be understood but to understand.
 - St. Francis
 - Steven Covey



Empathy : A Strategic Tool for Connectedness, Belonging, and Success

Listen within

- Develop a hyper awareness of self.
- Examine hegemonic embeddedness as it relates to learners.
- Explore issues with other educators.



Empathy: A Strategic Tool for Connectedness, Belonging, and Success

“Self-awareness, leaving your perspectives and increasing cultural competence are important in an intertwined world” Hanson, 2021, Slide 3.)



Chat Box Share

Empathy : A Strategic Tool for Connectedness, Belonging, and Success

Ways we can increase our own empathy:

- Find similarities with others.
- Identify and challenge your own prejudices and bias.
- Volunteer.
- Ask others to tell you their stories.
- Listen attentively.
- Ask questions.
- Try to step into the other person's shoes; see it from their viewpoint.
- Meet people where they are at.



Empathy: A Strategic Tool for Connectedness, Belonging, and Success

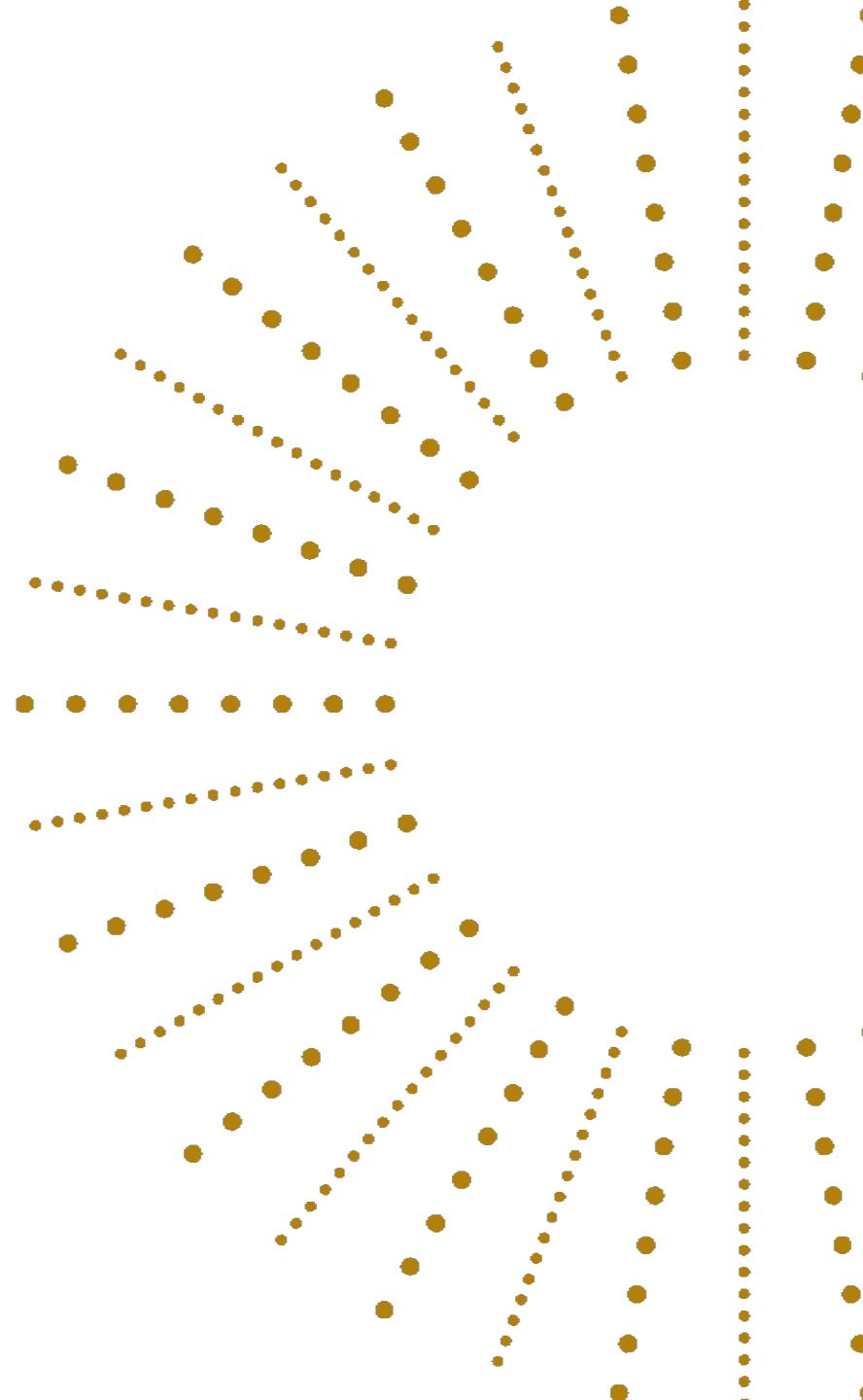
Empathic Listening Verbal or Email Communication

- Listen and occasionally acknowledge a point that the speaker has shared when face-to-face.
- When responding to an email, acknowledge the point that the writer has shared.
- See the situation through the eyes of your student.
- Don't interrupt.
- Use open-ended questions.
- Let the student know that you understand.
- Ask the student how you might support the student at this time.

See the situation through the eyes of your student.



Integrate Immersive and Diverse Content



Immersive and Diverse Content

Address people's backgrounds and needs with humility, attention, and empathy (Gladwell, 2019).

Let's Talk!



Immersive and Diverse Content

Culturally Sensitive and Adaptive Instruction

Parris and Linder-VanBershot (2010) citing Gunawardena and LaPointe, 2007, indicated that “culturally sensitive and culturally adaptive instruction” are essential skills for the instructional designers toolbox in terms of media choices and adaptation strategies such as choices, accommodations and modifications (p. 1).



Immersive and Diverse Content

Identify Dimensions of Culture with Empathy

Learner analysis and context analysis should occur to “identify those dimensions of culture that are most likely to impact instructional situations” (Parrish and Linder-VanBershot, 2010, para. 1).



Immersive and Diverse Content

What would happen with your learners if they were able to access video lectures or video assignment feedback?



The literature indicates that: *A variety of technology tools serves to promote collaborative learning across geographical boundaries and also individualizes the learning experience.*

Adaptive Content

What if study guides
with visuals were
available?



Immersive and Diverse Content

Might it be possible for you to find and show visuals that are from around the world by searching images by country?



Discussions

Discussion Study Guide

Discussions

Replying to students who responded to a question that you have asked.

Assignments

Assignment Study Guide

Immersive and Diverse Content

Could readings be from international journals and sources?

3. IMPROVING TEACHERS' COMPETENCY IN DESIGNING **INSTRUCTIONAL MEDIA** FROM ANORGANIC WASTE



Academic
Journal

By: Nurmaini Nurmaini. In: Jurnal PAJAR (Pendidikan dan Pengajaran), Vol 5, Iss 3, Pp 735-740 (2021); Laboratory of Elementary Teacher Education Study Program, Faculty of Education and Teacher Training, Universitas Riau Pekanbaru, Indonesia, 2021. Language: English; Indonesian, Database: Directory of Open Access Journals

This research was motivated by the need for learning which demanded the teacher not only to be proficient in teaching but also to facilitate students' learning activities in order to create stude...

Subjects: teachers' competence, **instructional media**, anorganic materials; Theory and practice of education; LB5-3640

[View record in DOAJ](#)

4. Need Analysis of Audio-Visual **Media** Development to Teach Digestive System for Elementary School



Academic
Journal

By: Stevi; Haryanto. International Technology and Education Journal, v4 n1 p22-29 Jun 2020. (EJ1286666), Database: ERIC

The purpose of this study is to obtain: (1) an overview of the current situation of the use of **instructional media** as a learning source in science teaching process in elementary school in Surakar...

Subjects: Audiovisual Aids; Audiovisual Instruction; Human Body; Science Education; Elementary School Teachers; Teacher Attitudes; Foreign Countries; **Educational Media**; Grade 5; Indonesia

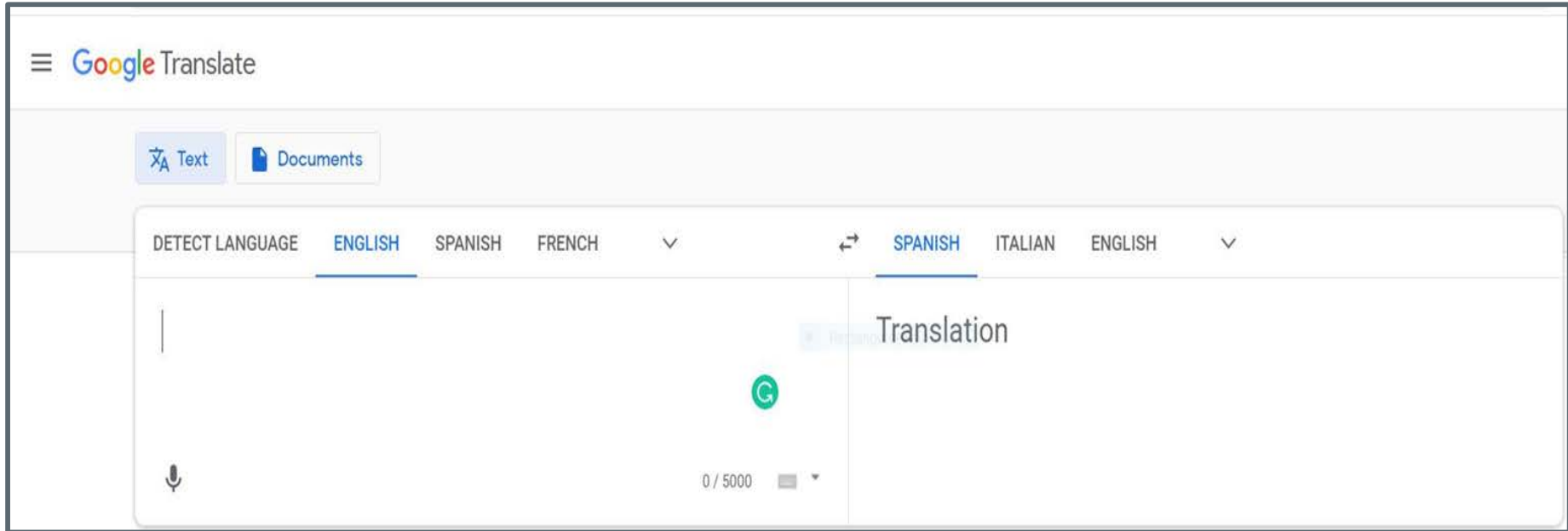
[Full Text from ERIC](#)

5. **Instructional Media** in the XV Century (A Case Study of Widodaren, Gerba, and Pasrujambe Inscriptions)



By: Rakai Hino Galeswangi. In: Berkala Arkeologi, Vol 40, Iss 1 (2020); Balai Arkeologi Yogyakarta, 2020. Language: English; Indonesian, Database: Directory of Open Access Journals

How Might You Go About Offering Language Support Translation?



Example

One Discussion + One Assignment. Your assignment is due by 11:59 p.m. ET Saturday of Unit 6. Submit your assignment to the Unit 6 Assignment Dropbox.

Una discusión + una tarea. Su tarea vence a las 11:59 p.m. ET el sábado de la Unidad 6. Envíe su tarea al Dropbox de tareas de la Unidad 6.

Have You Considered Creating Study Groups in Google Hangouts?

Start a group conversation

You can use classic Hangouts to message multiple people at the same time.

- Conversations can include up to 150 people.
- For video calls in classic Hangouts, learn about [requirements for using Google Meet](#).



Computer

Android

iPhone & iPad

Start a group conversation

1. Go to hangouts.google.com or open classic Hangouts in [Gmail](#).
2. Click New conversation + > New group +👤.
3. Enter the names or email addresses of the people you want to add.
4. Click Done ✓.

Optional: Name your group.

References



Choy, E. (2021, August 22). *3 ways to increase empathy and embrace diversity in the workplace*. Forbes. <https://www.forbes.com/sites/estherchoy/2021/08/22/3-ways-to-increase-empathy-and-embrace-diversity-in-the-workplace/De>

Gladwell, M. (2019). *Talking to strangers: What we should know about the people we don't know*. Little, Brown & Co.

Global Education Network Europe. (2019). *The state of global education in Europe 2019*. Global Education Network Europe. <https://static1.squarespace.com/static/5f6decace4ff425352eddb4a/t/5fc40cf96457125654ba5954/1606683902082/SOGE-2019-web-version+%282%29.pdf>

Hanson, R. (2021). *The foundations of well-being*. Empathy Talk. <https://www.thefoundationsofwellbeing.com>

Kasl, E., & Yorks, L. (2016). Do I really know you? Do you really know me? Empathy amid diversity in differing learning contexts. *Adult Education Quarterly*, 66(1), 3–20.

Pavlovich, K. (2011). *Empathy, connectedness and organization*. Academy of Management Annual Meeting Proceedings, 2011(1), 1–6.

Parrish, P., & Linder-VanBerschot, J. (2010). Cultural dimensions of learning: Addressing the challenges of multicultural instruction. *The International Review of Research in Open and Distributed Learning*, 11(2), 1–19. Retrieved from <http://www.irrodl.org/index.php/irrodl/article/view/809/1497>

Phan, T. (2018). Instructional strategies that respond to global learners' needs in massive open online courses. *Online Learning*, 22(2). <https://doi.org/10.24059/olj.v22i2.1160>

Rajendran, P. A. (2020, November 30). Teacher competencies for inclusive education: Will emotional intelligence do justice?. *Shanlax International Journal of Education*. <https://eric.ed.gov/?id=EJ1278158>.

Rivera, J., & Mahoney, C. O. (2018). Promoting a sense of global community. *Peace and Conflict: Journal of Peace Psychology*, 24(3), 347–353.

Robbins, M. (2021). *Bring your whole self to work: How vulnerability unlocks creativity, connection, and performance*. Hay House Business..

Team, T. A. (2019, December 17). *Empathy archives*. Advantage Performance Group. <https://www.advantageperformance.com/tag/empathy/>

Washburn, G. N. (2008). Alone, confused, and frustrated: Developing empathy and strategies for working with English language learners. *Clearing House*, 81(6), 247–250. <https://doi-org.libauth.purdueglobal.edu/10.3200/TCHS.81.6.247-250>

Vosloo, S. (2018). *Designing inclusive digital solutions and developing digital skills*. United Nations Educational, Scientific and Cultural Organization. <http://bibliotecas.dglab.gov.pt/pt/Documents/GuidlinesServDigInclusivos.pdf>

Presenter Contact

Denise Douglas, Ed. D. ddouglas@purdueglobal.edu

Lindsey Jarvie lindsey.jarvie@purdueglobal.edu

Margaret Norby mnorby@purdueglobal.edu

